

輝煌大秦

TERRACOTTA ARMY

Legacy of the First
Emperor of China

April 20–August 12, 2018

Family Guide

Calling All Archaeologists!

The Cincinnati Art Museum is looking for a curious crew of amateur archaeologists to explore *Terracotta Army: Legacy of the First Emperor of China* and uncover the mysteries of China's First Emperor.

Are you ready for a historical hunt through ancient China?

Every good archaeological crew needs a great name—Share your crew's name in the box below:



Turn the page to meet your Guide, he knows a lot about China in the 3rd Century BC...

Exhibition organized by the Cincinnati Art Museum and the Virginia Museum of Fine Arts, in partnership with Shaanxi Provincial Cultural Relics Bureau, Shaanxi Provincial History Museum, Shaanxi Cultural Heritage Promotion Centre, and Emperor Qin Shihuang's Mausoleum Site Museum of the People's Republic of China.

This exhibition is supported by an indemnity from the Federal Council on the Arts and the Humanities.

**ORGANIZED WITH THE GENEROUS SUPPORT OF
THE HAROLD C. SCHOTT FOUNDATION.**

PRESENTED BY:



Fort Washington
Investment Advisors, Inc.
A member of Western & Southern Financial Group®



Western & Southern
Financial Group



ART WORKS.

**National
Endowment
for the Arts**
arts.gov



THE POWER
OF FLIGHT

GENEROUSLY SUPPORTED BY:

John and Dorothy Hermanies Fund // E. Rhodes and Leona B. Carpenter Foundation
Christie's // Elizabeth Tu Hoffman Huddleston // Jeanann Gray Dunlap Foundation
Josephine Schell Russell Charitable Trust, PNC Bank, Trustee // Charles Scott Riley III
Foundation // The Sutphin Family Foundation

In Memory of Frank and Margaret Linhardt

The First Emperor and the Unification of China



Welcome to Ancient China, in the year 212 BC. My name is Qin Shihuang and I am the First Emperor of China. I will be your guide on this archaeological adventure. Who better to help you unlock the mysteries of my life, than me!

Let's Unify China

Before I became the First Emperor of China in 221 BC, my name was Ying Zheng and I was the King of the Qin (say chin). I was only 13 years old. Imagine you are 13 and you just became king or queen of your own country. How would you feel? How would you rule?

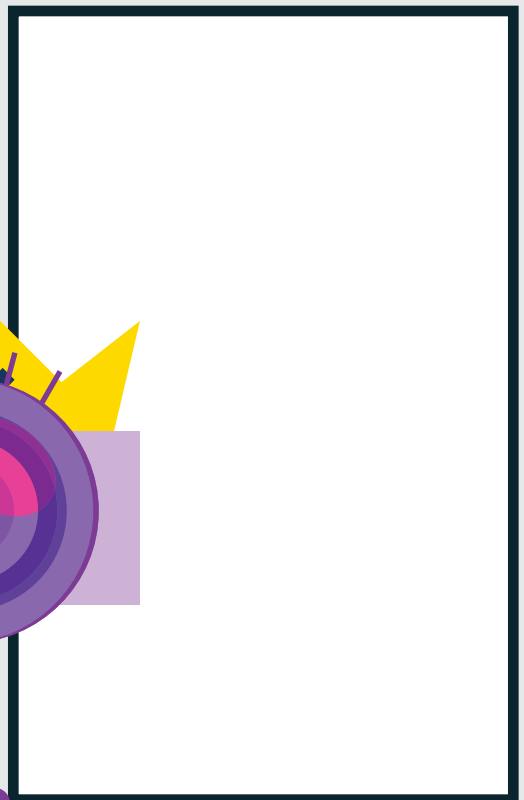
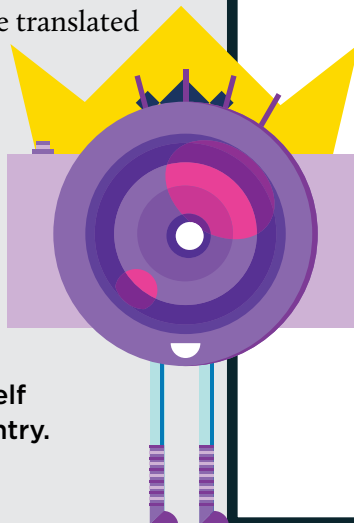
Draw or Write the first 3 things you would do as king or queen:



When I came to power, China was made up of seven different states and I wanted to rule them all. Through a series of battles, my army helped me conquer my enemies. My first act after unification was to claim myself the First Emperor of China and change my name to Qin Shihuang. My name can be translated to "First Emperor of Qin."

Would you change your name if you became the Emperor or Empress of your country? What would your new name be and why?

Draw a picture of yourself as the ruler of your country. Don't forget to include your new name!

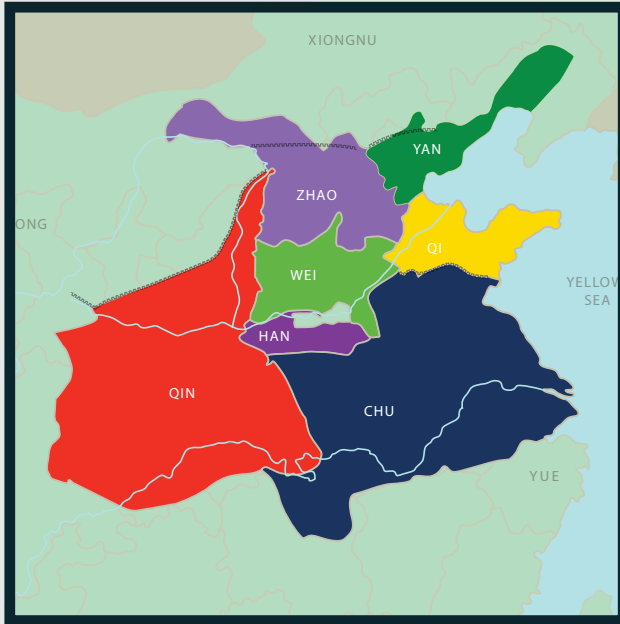
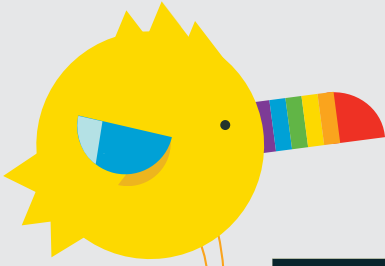


Banliang for Everyone

As the First Emperor of China, I enacted several new laws. One of these was to standardize the Qin *banliang* coin as the new national currency—or type of money.

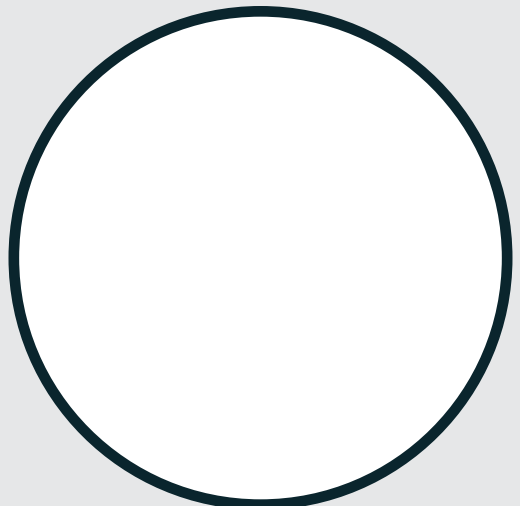
Before I came to power, each of the seven states had a different kind of money, this made things very confusing when trading goods.

Look at the case of money in this gallery. Using the map below, draw a line from the coin to the state that used that form of currency:



I selected the coin of my own people, the Qin, as the national currency of China. It is called a *banliang*.

What type of coin would you design if you were the Emperor or Empress of your country? What would you call your coin? Draw it to the right.



Writing on the Wall



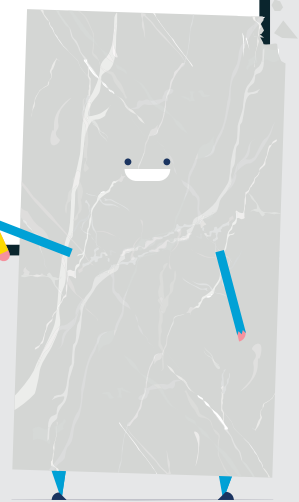
When I came to power, one of the most important laws I passed was the creation and adoption of universal style of writing or script. This meant that everyone in China had to write the same way. I called it the Qin Script.

Find the case of clay seals, just like the one on the front of this guide. Look specifically at this bronze *Imperial Edict on Plaque* (hint—it is green). What do you think this plaque says? Share your translation below:

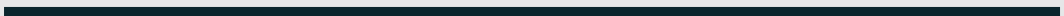
Great Guess! This plaque is actually an imperial edict or official order. I required that this order be written on all weights and measures used in the country.

What style of writing would you create if you were the Emperor or Empress of your own country? Write a secret imperial edict in your very own style of writing below—when you are finished, ask your friend to decode your message.

As you can see, I was very busy in the first few years of my rule. Not only did I create a single system of money, writing and weights and measures, I also traveled all over my new empire to seek advice from scholars on how to be a successful ruler and to live a long life. I wanted to rule forever.



Before you leave this section of the exhibition, find one other really important and BIG thing I built that is still around today. What is it?



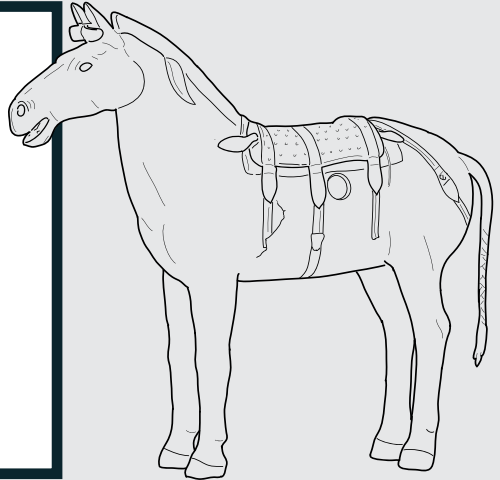
The Birth of the Qin Empire

Finding My Roots

Now that you have learned about the great things I did when I was the First Emperor of China, let's go back in time and learn about the Qin people, my ancestors.

My people first lived in a rugged area full of mountains in western China. Horses were very important to my people and we made our living herding and breeding them for trade.

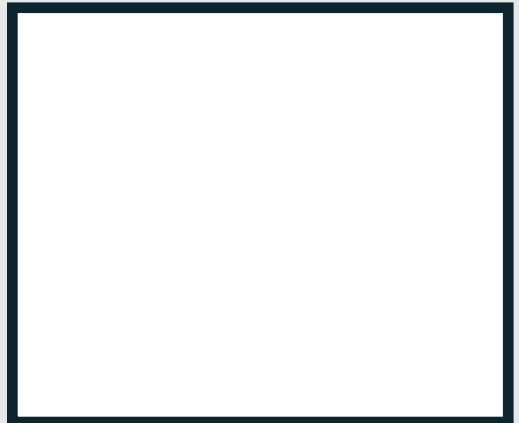
Imagine you are one of my early ancestors and you are in charge of taking care of our family's horses. In this box, draw a picture of your favorite horse:



In 771 BC we became an official state. In the 500 years that followed, we grew in power and size. We moved eastward to lands near the river where we could farm and trade goods.

Archaeological digs from Qin palaces and tombs can tell you a lot about royalty, like me, aristocrats, commoners and neighboring nomads.

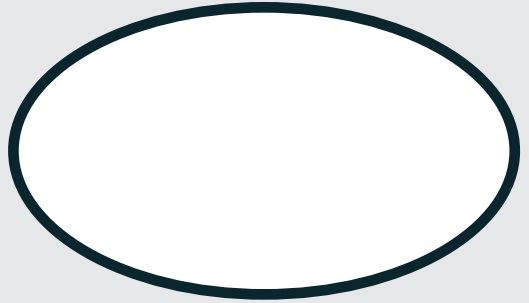
It is 2,000 years in the future. Archaeologists have just found the remains of your neighborhood. In the space to the right share what they found and what they might learn about you and your neighbors.



Find the two cases of jewelry in this section. All these pieces of jewelry have something in common, something I really liked, what is it?



Look for the *Dragon Pendant in Shape of Lantern*. Can you help me find the dragon on this piece? Draw a picture of what you think this dragon may look like when he isn't wound into a tight little ball.



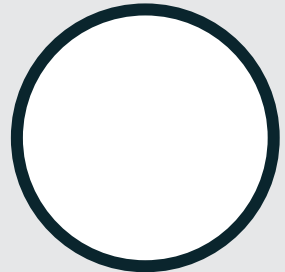
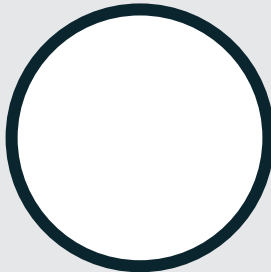
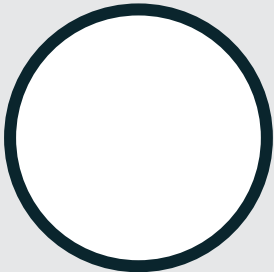
Ancestral Architecture

Ahh, Yongcheng, one of my favorite places in my entire empire. It was the capital of the Qin for more than 300 years and it is where I was inaugurated as the First Emperor in 238 BC. Because it was such an important place, the Qin built a lot of palaces, royal tombs, offices, and workshops here.

The high number of building projects called for lots of roof tile ends. Roof tile ends projected off the sides of buildings and protected them from wind and rain.

Find the roof tile ends on display near to the end of this gallery.

What do all of these tile ends have in common?
What do you think the designs can tell you about my people?
Which one is your favorite? Why?



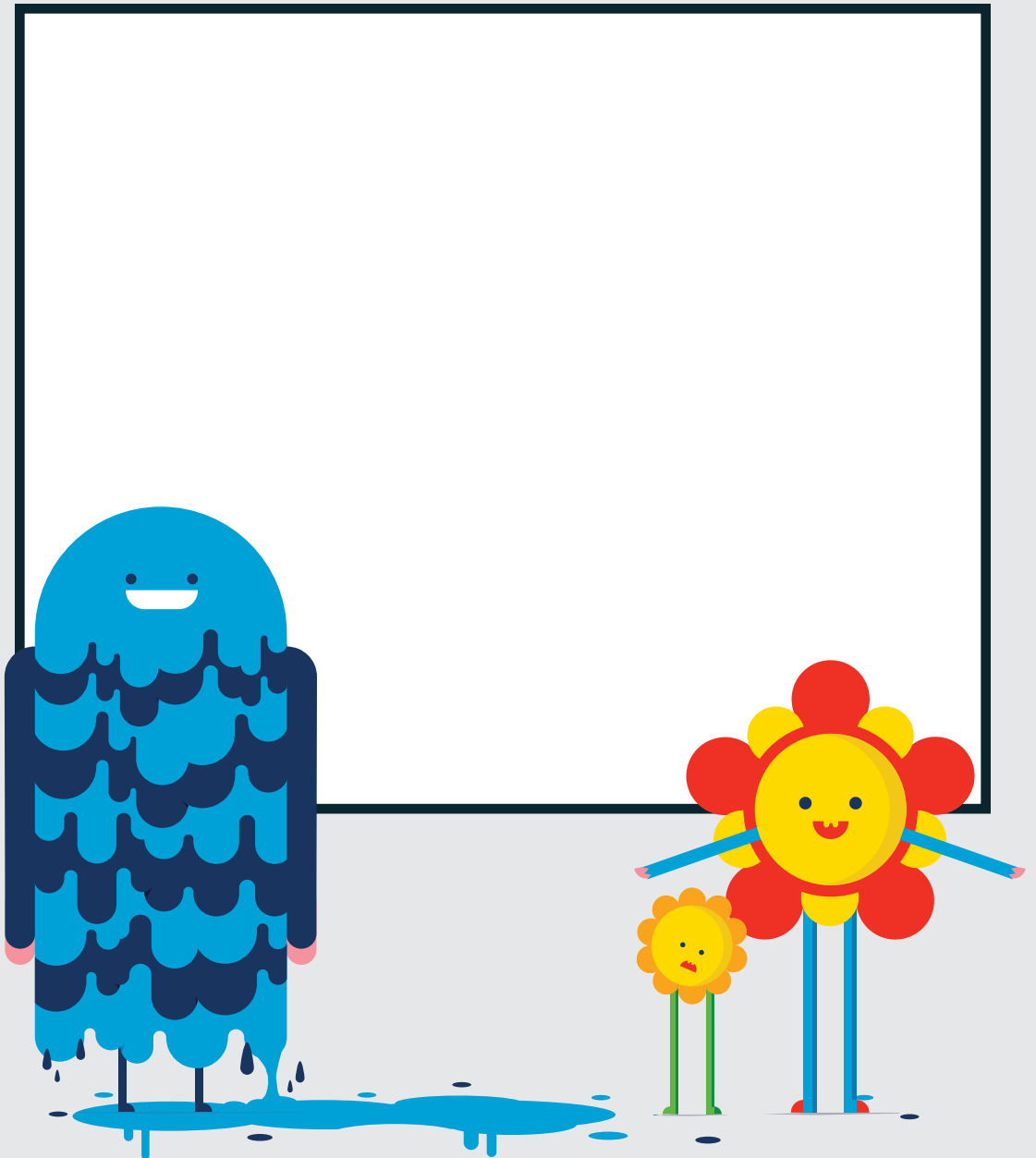
Draw Your own designs for a Roof Tile end in the circles above:



Xianyang—The Home of an Empire

About a 130 years before I came to power, my Qin ancestor, King Zhaoxiang built a beautiful palace in the city of Xianyang. After I unified China, I made the Xianyang the capital of my empire.

Imagine you are setting up the capital city for your new empire. What sorts of buildings would you need? What would your palace look like? In the space below design your own imperial palace, fit for an Emperor or Empress:



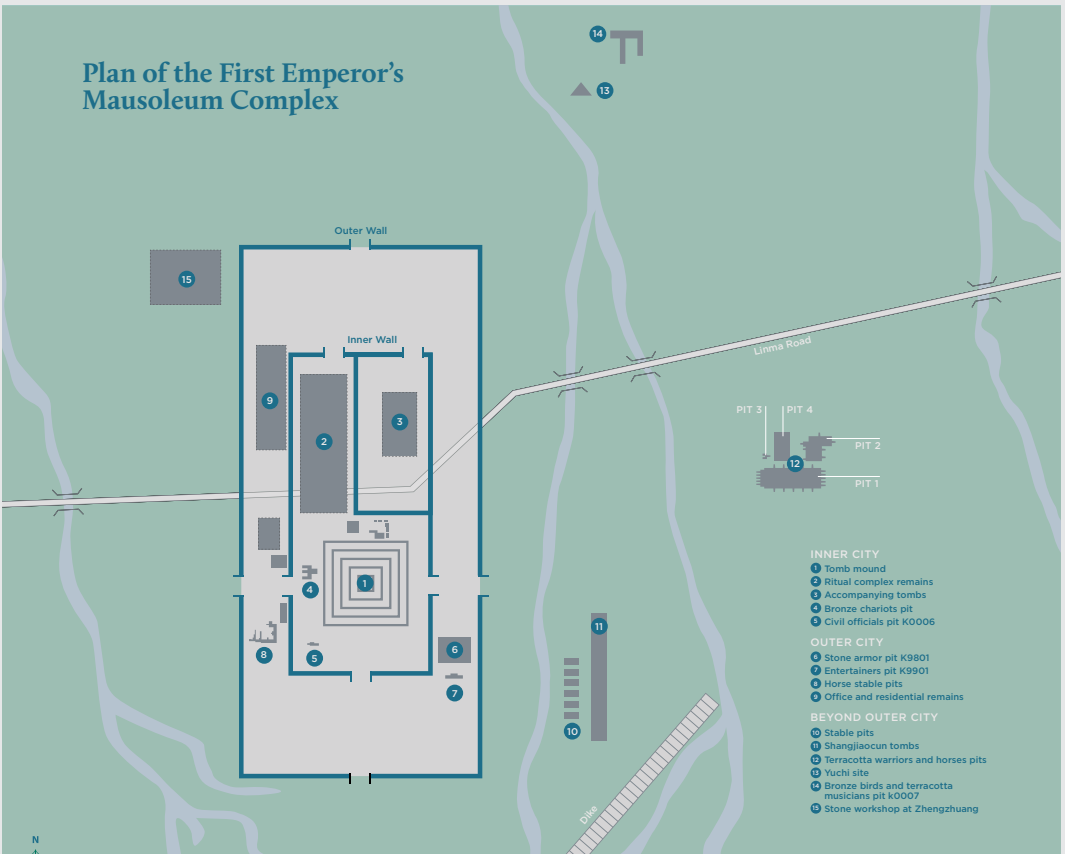
Quest for Immortality

When I became the First Emperor, I decided that I wanted to live and rule China forever. Now, I wasn't sure I would actually live forever, so I created a plan for my afterlife.

When I became the Qin king at age 13, I ordered workers to begin constructing my tomb. I told them that I wanted to rule in the afterlife so everything that surrounded me while I was alive had to be buried with me. This included over 8,000 life-size terracotta figures representing members of my household, entertainers, animals and, of course, my army!

Unfortunately, on one of my imperial tours in 210 BC, I died. I was buried in a my huge mausoleum located at the base of Mount Li, 30 miles from Xi'an.

Take a look at the big map of my mausoleum in this gallery, answer the questions below based on your investigation:



My mausoleum is 38 square miles in size, that is almost half the size of what “Queen” city?

My necropolis is made up of several “pits,” how many can you find?

Find #12 on the map—what did I store in these three pits?

My Terracotta Army

Awesome! You found my Terracotta Army! My legion of warriors were hidden from view for over 2,000 years until some farmers digging a well in 1974 found them. Like a real army, mine is made up of generals, middle-ranking officers, infantrymen, archers, charioteers, cavalrymen and even horses.



Look closely at each of the warriors in this gallery.
Can you match the fun fact to the correct warrior? Give it a try.

Draw a line from the fact to the correct warrior, then try your hand at answering each bonus question:

I need to hold on tight or my chariot will get away from me. My armor looks different than that of my fellow soldiers, how and why?

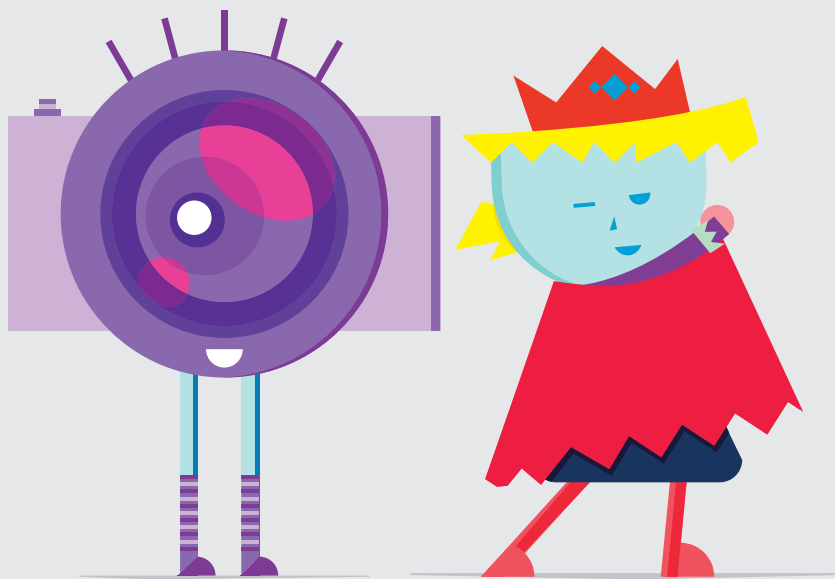
I carry a crossbow and stand around the edge of Pit 2 to form a protective barrier. What am I NOT wearing?



Armored General Middle Ranking Officer Armored Infantryman Armored Charioteer Standing Archer

Because of my high rank, my armor is decorated with ribbons. My finger is pointing to something, what is it?

My sleeves are rolled up, ready for action but my raised left arm is empty. What did I once hold?



Are you ready for battle, I know I am. I just need to kneel down and load what?

My pleated robe and armor needs to be short so that can move easily during battle. Why?



Kneeling Archer



Cavalryman



Cavalry Horse

My fellow soldiers and I make up the bulk of our Emperor's army. What pit can you find me in?

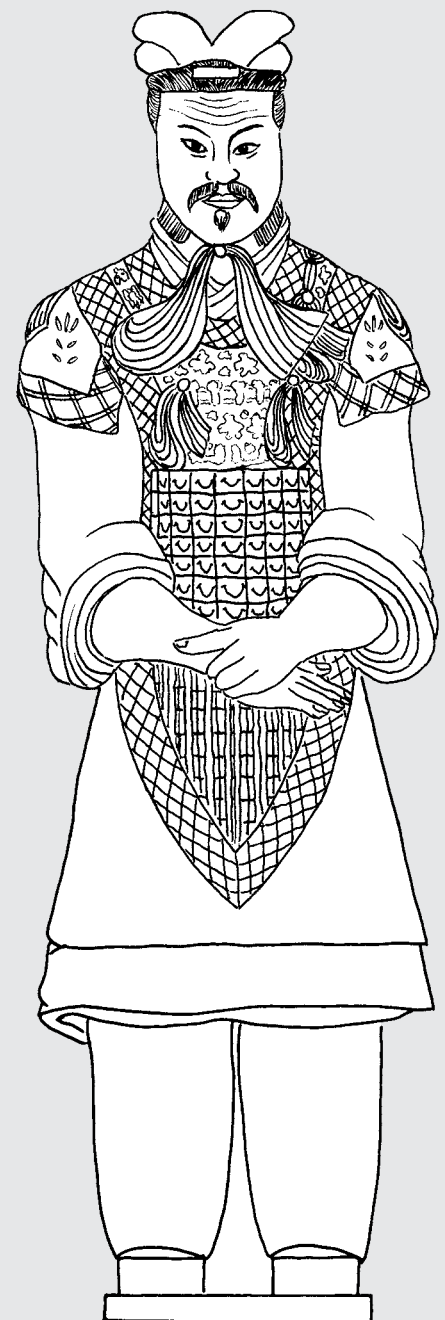
In the pits, you can always find me paired with an armored soldier. I seem to have a big hole in my side, why?

In Living Color

Over the years my soldiers have lost a bit of their luster. They were once brightly painted with shades of purple, blue, green, yellow, orange, black, white and red. Can you imagine what my army looked like in 210 BC? They were magnificent!



When you get home, color your own Terracotta Warrior. Take Your Terracotta Warrior with You. Cut along the edge to create a cool bookmark!



Cover

Seal Clay with Seal of Associate Official of Inner Court, Qin dynasty (221–206 BC), earthenware, Excavated from Xiangjiaxiangcun, Weiyang, Xi'an, 2000, Xi'an Museum, H25:3.11, 2000.1, H3:3/9:27 // *Standing Archer*, Qin dynasty (221–206 BC), earthenware, Excavated from Pit 2, Qin Shihuang's Mausoleum, 1997, Emperor Qin Shihuang's Mausoleum Site Museum, 002818

Section 1

Image of First Emperor, Ying Zheng (259–210 BC) // *Coin from Qin Inscribed with "Banliang"*, Warring States Period (475–221 BC), Qin Dynasty (221–206 BC), bronze, Excavated at Yuchi site, Qin Shihuang's Mausoleum, 1978, Gift of Chen Zunxiang, 1981, Emperor Qin Shihuang's Mausoleum Site Museum, 005529, Shaanxi History Museum, 81.149(2) // *Spade-Shaped Coin from Zhao Inscribed with "Lan"*, Warring States Period (475–221 BC), bronze, Acquired in Xi'an, 1957, Shaanxi History Museum, 58.16 // *Spade-Shaped Coin from Wei Inscribed with "Anyi Erjin"*, Warring States Period (475–221 BC), bronze, Acquired in Xi'an, 1957, Shaanxi History Museum, 72.73 // *Spade-Shaped Coin from Han Inscribed with "Liangyi"*, Warring States Period (475–221 BC), bronze, Gift of Chen Zunxiang, 1981, Shaanxi History Museum, 81.146 // *Knife-Shaped Coin from Qi*, Warring States Period (475–221 BC), bronze, Shaanxi History Museum, 65.211 // *Knife-Shaped Coin from Yan Inscribed with "Ming"*, Warring States Period (475–221 BC), bronze, Shaanxi History Museum, 99.1/1 // *Gold Coin from Chu Inscribed with "Yingyuan"*, Warring States Period (475–221 BC), bronze, Transferred from Anhui Provincial Museum, 1972, Shaanxi History Museum, 72.31 // *Imperial Edict on Plaque*, Qin dynasty (221–206 BC), 221 BC, bronze, Gift of Jiang Zongyi, 1957, Shaanxi History Museum, 57.176

Section 2

Bracelet, 8th century BC, Spring and Autumn Period (770–476 BC), nephrite, agate, faience, Excavated from Tomb 26, Liangdaicun, Hancheng, 2008, Shaanxi Provincial Institute of Archaeology, M26:267 // *Dragon Pendant in Shape of Lantern*, Spring and Autumn Period, Duke Jing's reign (r. 576–537 BC), nephrite, Excavated from Tomb of Duke Jing, Fengxiangxian, 1986, Shaanxi Provincial Institute of Archaeology, 000924 // *Roof-Tile End with Tiger and Good Design*, Warring States period (475–221 BC), earthenware, Excavated from Yongcheng site, Fengxiangxian, 1982, Shaanxi Provincial Institute of Archaeology, 000929 // *Roof-Tile End with Deer Design*, Qin Dynasty (221–206 BC), earthenware, Excavated from Yaojiagang, Fengxiangxian, 2005, Shaanxi Provincial Institute of Archaeology, T1202:42 // *Roof-Tile End from Tuoquan Palace*, Warring States period (475–221 BC), earthenware, Unearthed from Sunjianantou, Fengxiangxian, 1996, Shaanxi Provincial Institute of Archaeology, 000663 // *Roof-Tile End with Water Design*, Warring States period (475–221 BC), earthenware, Excavated from Doufucun, Fengxiangxian, 2006, Shaanxi Provincial Institute of Archaeology, BE000585 // *Roof-Tile End with Spiral Design*, Warring States period (475–221 BC), earthenware, Excavated from Sunjianantou, Fengxiangxian, 1996, Shaanxi Provincial Institute of Archaeology, BE000655 // *Roof-Tile End with Leaf Design*, Warring States period (475–221 BC), earthenware, Excavated from Mausoleum 4, Eastern Qin Mausoleum, 2015, Shaanxi Provincial Institute of Archaeology, QDIVT012119-2 // *Roof-Tile End with Floral Design*, Warring States period (475–221 BC), earthenware, Excavated from Mausoleum 4, Eastern Qin Mausoleum, 2015, Shaanxi Provincial Institute of Archaeology, QDIVT011119-2 // Image of Xianyang Palace No. 1

Section 3

Armored Charioteer, Qin dynasty (221–206 BC), earthenware, Excavated from Pit 1, Qin Shihuang's Mausoleum, 1980, Emperor Qin Shihuang's Mausoleum Site Museum, 002539 // *Armored General*, Qin dynasty (221–206 BC), earthenware, Excavated from Pit 1, Qin Shihuang's Mausoleum, 1977, Emperor Qin Shihuang's Mausoleum Site Museum, 002523 // *Armored Infantryman*, Qin dynasty (221–206 BC), Earthenware, excavated from Pit 1, Qin Shihuang's Mausoleum, 1992, Emperor Qin Shihuang's Mausoleum Site Museum, 002753 // *Cavalryman*, Qin dynasty (221–206 BC), earthenware, Excavated from Pit 2, Qin Shihuang's Mausoleum, 1977, Emperor Qin Shihuang's Mausoleum Site Museum, 002763 // *Cavalry Horse*, Qin dynasty (221–206 BC), earthenware, Excavated from Pit 2, Qin Shihuang's Mausoleum, 1977, Emperor Qin Shihuang's Mausoleum Site Museum, 003160 // *Kneeling Archer*, Qin dynasty (221–206 BC), earthenware, Excavated from Pit 2, Qin Shihuang's Mausoleum, 1977, Emperor Qin Shihuang's Mausoleum Site Museum, 002744 // *Middle-Ranking Officer*, Qin dynasty (221–206 BC), earthenware, Excavated from Pit 1, Qin Shihuang's Mausoleum, 1976, Emperor Qin Shihuang's Mausoleum Site Museum, 000849 // *Standing Archer*, Qin dynasty (221–206 BC), earthenware, Excavated from Pit 2, Qin Shihuang's Mausoleum, 1997, Emperor Qin Shihuang's Mausoleum Site Museum, 002818