

Collection Highlights: Works by LGBTQ+ Artists

The Cincinnati Art Museum believes that art is for everyone. Our mission is to use the power of art to connect communities and contribute to a more vibrant Cincinnati, and we embrace the vibrant diversity represented in our Greater Cincinnati LGBTQ+ community. We strive to be a welcoming and open environment for all.

Enjoy these works by artists who identify as LGBTQ+ in the museum's permanent collection.

The museum is actively engaged in the digitization of our permanent collection, which contains over 67,000 works of art. While the entire museum collection is not currently online, images and information are frequently being added and updated. Please note that not all objects featured online are currently on view in our galleries. Explore the #CAMcollection by visiting cincinnatiartmuseum.org/collection.

Nick Cave



Online

Nick Cave (American, b. 1959), *Soundsuit*, 2009, mixed media, Museum Purchase: Alice F. and Harris K. Weston Endowment for Contemporary Art and Trustee Art Purchase Fund, 2013.19a-d, © Nick Cave 2016

CAM Look:
bit.ly/NickCaveSoundsuit

Felix Gonzalez-Torres

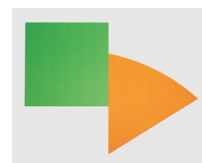


Main Lobby—First Floor

Felix Gonzalez-Torres (American, b. Cuba, 1957–1996), *Untitled (Portrait of the Cincinnati Art Museum)* (detail), 1994, paint on wall, Museum Purchase: Gift of the Contemporary Collectors Circle, 1994.218, © The Felix Gonzalez-Torres Foundation

CAM Look:
bit.ly/FelixGonzalezTorresUntitled

Ellsworth Kelly

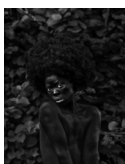


Gallery 105—First Floor

Ellsworth Kelly (American, 1923–2015), *Green Panel with Orange Curve*, 1989, oil on canvas, two joined panels, Gift of PNC Bank, by exchange, 1996.447

CAM Look:
bit.ly/CAMLookEllsworthKelly

Zanele Muholi



Online

Zanele Muholi (South African, b. 1972), *HeVi, Oslo*, from the series *Hail the Dark Lioness (Somnyama Ngonyama)*, 2016, gelatin silver print, Museum Purchase: Carl Jacobs Foundation, 2017.71, © Zanele Muholi

CAM Look:
bit.ly/ZaneleMuholiHeViOslo

Andy Warhol



Gallery 231—Second Floor

Andy Warhol (American, 1928–1987), *Soup Can (Cream of Mushroom)*, 1962, casein and pencil on linen, Promised Bequest of Alice F. and Harris K. Weston, L53.2004, © 2016 The Andy Warhol Foundation for the Visual Arts, Inc. / Artists Rights Society (ARS), New York

CAM Access:
bit.ly/CAMAccessWarhol