

Collection Highlights:

Works by Asian American & Pacific Islander Artists

Asian cultures and artists play an immense role in the Cincinnati Art Museum's collections. During Asian American & Pacific Islander Heritage month, we join institutions across the nation in calling attention to some of the many AAPI artists who have enriched the story of American art and are instrumental to its vibrant future.

Enjoy these selected works by American artists of Asian descent in the museum's permanent collection.

The museum is actively engaged in digitization of the permanent collection, which contains over 67,000 works of art. While the entire collection is not currently online, new and updated content is added every week. Explore the #CAMcollection online from wherever you are, at cincinnatiartmuseum.org/collection.

Explore Online

Discover works currently off view at cincinnatiartmuseum.org/collection and search by the artwork's title.

Nam June Paik



Nam June Paik (American, b. Korea, 1932-2006), *Powel Crosley, Jr.*, 1992, wood, plastic, paint, glass, custom electronics, parts from a variety of Crosley products that date from the 1920s through the early 1950s, eight CRT televisions, two DVD players, video, John J. Emery Endowment and The Edwin and Virginia Irwin Memorial, © Nam June Paik Estate, 1992.140

CAM Look: bit.ly/CAMLookNamJunePaik

Yashimura Ishimoto



Yashimura Ishimoto (American, b. Japan, 1921), *Chicago, 1950*, gelatin silver print, Museum Purchase with funds provided by Thomas R. Schiff, 2003.273, © Yashimura Ishimoto

An-My Lê



An-My Lê (American, b. Vietnam, 1960), *Ship Security, US Navy Hospital Ship Comfort, Haiti*, from the series *Events Ashore*, 2010, printed 2014, inkjet print, Museum Purchase: Carl Jacobs Gift Fund and the Friends of Photography, 2014.28, © An-My Lê

CAM Look: bit.ly/CAMLookAn-MyLê

View in the Galleries

Kitaro Shirayamadani



Gallery 114—First Floor

Vase, 1900, The Rookwood Pottery Company (American, est. 1880), Kitaro Shirayamadani (American, b. Japan, 1865–1948), decorator, stoneware, Black Iris glaze line with copper and silver electrodeposits, Museum Purchase: Lawrence Archer Wachs Fund and a generous gift from Judge and Mrs. Norman A. Murdock, 2004.68

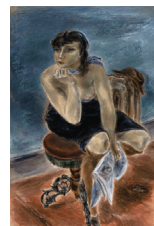
Bukang Y. Kim



Gallery 124—First Floor

Bukang Y. Kim, (Korean American, b. 1943), *Column*, 1988, mixed media on canvas, Gift of Dr. Young Ghon Kim, Bukang Yu Kim, and Family, 2015.140

Yasuo Kuniyoshi



Gallery 212—Second Floor

Yasuo Kuniyoshi (American, b. Japan, 1893–1953), *Daily News*, 1935, oil on canvas, The Edwin and Virginia Irwin Memorial, 1959.48. © Estate of Yasuo Kuniyoshi / Licensed by VAGA at Artists Rights Society (ARS), NY

Esther Shimazu



Gallery 222—Second Floor

Leaping Tabby, 2002, Esther Shimazu (American, born 1957), stoneware, The Nancy and David Wolf Collection, 2011.139, © Esther Shimazu

